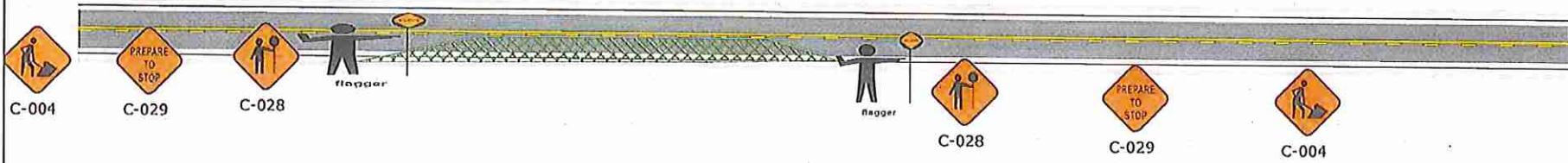


GENERIC SETUP WILL BE USED WHEN WORK TAKES PLACE FOR ALL CURB AND GUTTER REPAIRS
ALL SIDE STREETS WILL BE APPROPRIATELY SIGNED



GRANDVIEW BLACKTOP	Date: 10/31/2016 Author: GRANDVIEW BLACKTOP
	Comments: WORK TO TAKE PLACE BETWEEN 7AM-5PM TRAFFIC WILL BE SINGLE LANE ALTERNATING IN WORK ZONE NO PARKING SIGNS WILL BE PLACED WHERE NEEDED TCP'S TO BE AWARE FO PEDESTRIANS AND CYCLISTS ALL TIMES